

Fire Roller Shutter
Ferroflam[®] RI921 El90 C2
optional smoke control S_a or S₂₀₀



CE-marking according to EN 13241 and EN 16034



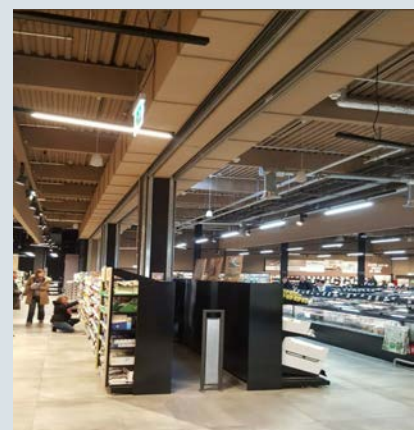
Shopping mall



Fair



Airport



Supermarket

Description of services

Effertz Fire Roller Shutter type Ferroflam® Rl921, classification El90 C2 according to EN 16034. CE-marking according to EN 13241 and EN 16034 with declaration of performance according to EU Construction Products Regulation and declaration of conformity according to EU Machinery Directive.

Technical specifications

Twin fire roller shutter consisting of:

- 2 hot-galvanized steel curtains with internal insulation.
- Self-monitoring safety contact strip at each bottom bar (no helix suppl cable).
- All non-galvanized steel parts are protected by a single coating of primer (e.g. brackets).
- 2 electrical drives 3/N/PE ~ 400 V 16 A, 50 Hz (one for each barrel). In event of an alarm the shutter closes without electrical power at a closing speed of up to 15 cm/s (self-closing, failsafe by gravity).
- Drive chains with a safety factor of 6.
- Below 2,50 m height: chain guard.
- Approved safety arrestor in accordance with EN 12604.
- Release device with backup battery to hold open the door even in case of failure of main power supply for some time.
- Optical smoke detectors (2 per 4 m width).
- Siren with flasher being triggered automatically in case of a fire alarm (acc. to EN 12604).
- 1 manual emergency release for each side of the wall.
- 1 key contact switch, prepared for profile half-cylinder, for each side of the wall.
- Self-hold (impulse control) to open, dead man's (hold-to-run) control to close.
- Documentation in English or German in accordance with Effertz documentation standard on CD-ROM.

Notes

This roller shutter does not need a coil-casing. You may order a steel casing as an extra.

Environmental temperature range: 5 up to 40 °C.

The wall to which the shutter is attached must have at least the same fire resistance classification time as the door (e.g. REI90 or F90-A).

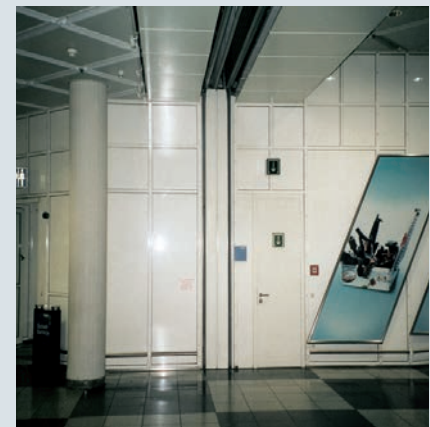
In addition, it must be able to carry the loads applied by the door also under fire conditions (to be verified by customer).

Possible wall types are for example:

- concrete or reinforced concrete
- masonry
- AAC masonry units
- clad steel resp. wooden supports
- steel resp. wooden stud wall with gypsum plasterboards



Details



Airport



Details



Details